

NEWS

COBUS NCAD 2023

Intelligent digital solutions



New perspectives with
COBUS NCAD 2023

Benefit from the advantages of the current COBUS NCAD version.

COBUS WorkPlan
for multi-channel machines

COBUS
interface JSON

page 2

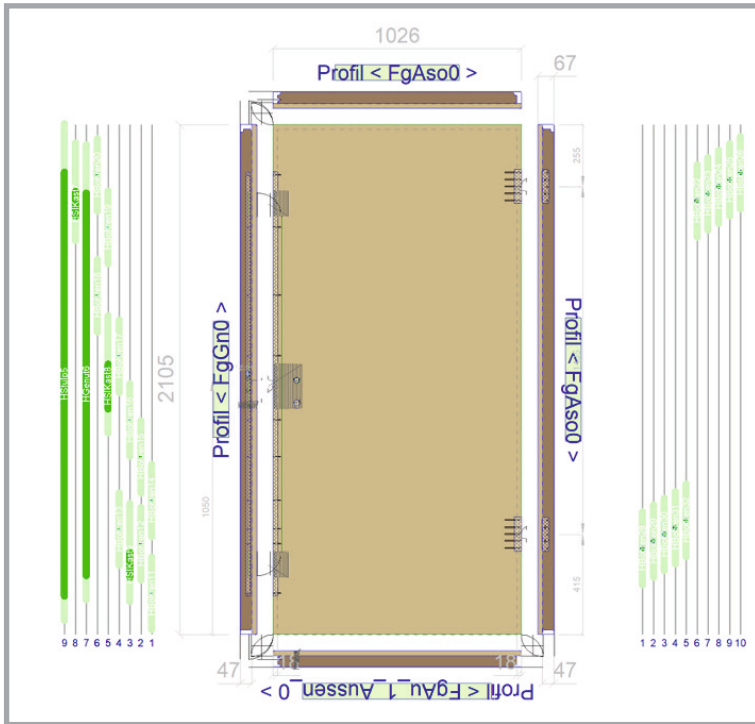
COBUS NestingPrint

COBUS AutoRefresh /
COBUS ConnectDrive

page 3

COBUS tool data import
woodWOP

page 4



COBUS-WorkPlan for multi-channel machines

The COBUS WorkPlan defines the machining operations for the machining areas.

— fittings machining for door machines

— consideration of the working areas for each tool

— division of the machining into several channels

— determination of the machining sequence (several channels work in parallel, machining is collision-free)

COBUS interface JSON

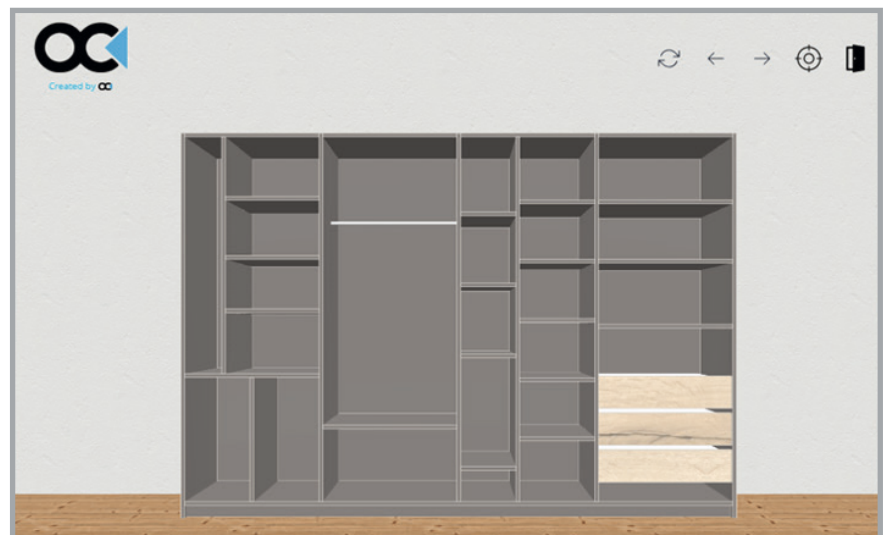
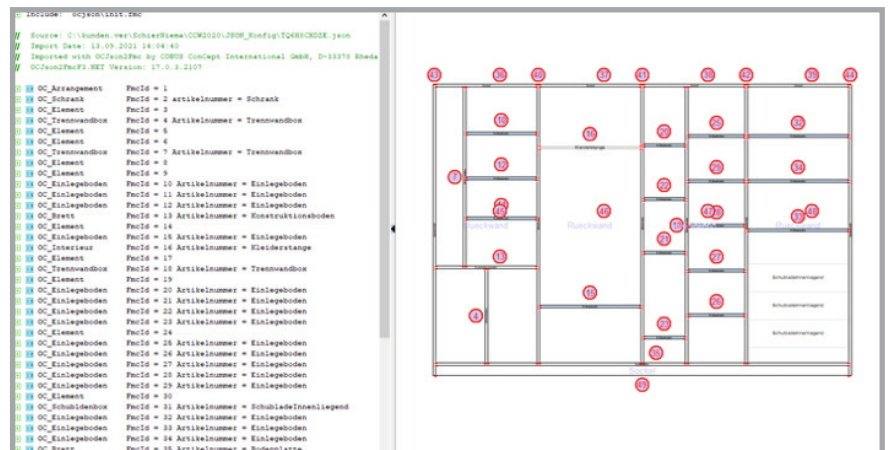
Via JSON file, complete cabinet plans can be transferred from the online configurator of the manufacturer ObjectCode.

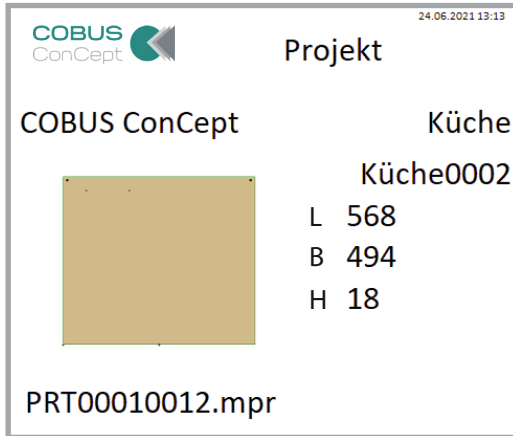
— decomposition of the planning into individual components

— fully automatic generation of CNC programmes

— parts list for panels incl. fitting parts

— parts list can be transferred to the ERP system





COBUS AutoRefresh/ COBUS ConnectDrive

New function in COBUS NCAD to keep its workstations on the same data status.

COBUS NestingPrint

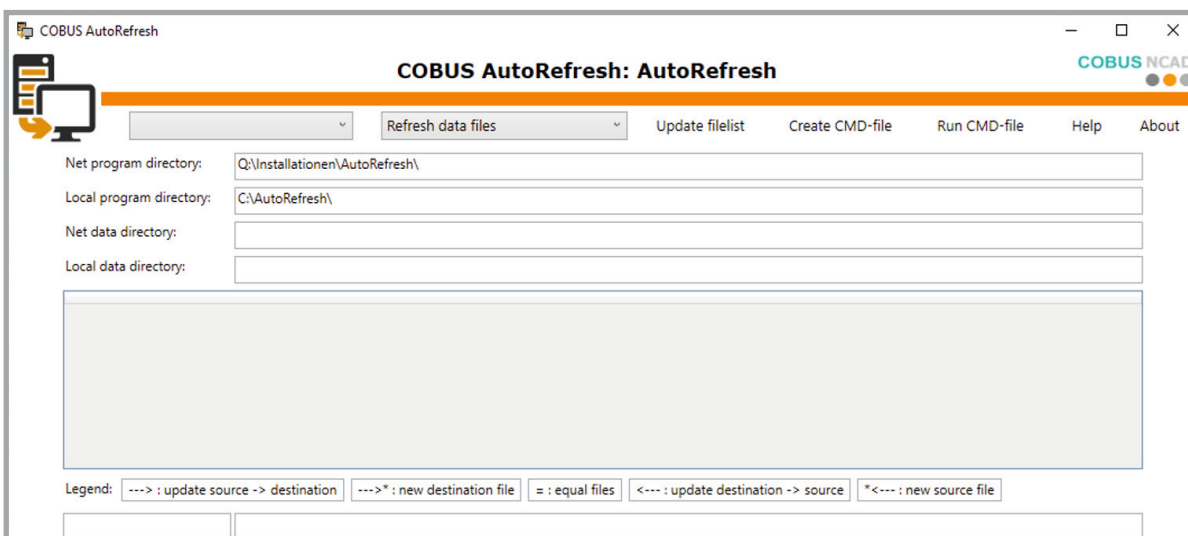
COBUS NestingPrint enables the machine operator to conveniently print the correct labels for the individual parts of his nesting result. The label generated by COBUS NCAD is printed by touch or mouse click on the individual part. After creation, the individual part is marked in colour as "completed".

COBUS AutoRefresh checks the master version on the server with the workstation version to see if there are newer files in the meantime and then copies the new data to the workstation.

option: COBUS ConnectDrive checks whether the network drive is present - if not, it can set a network-independent drive for the single workstation.

generation of the SVG file from the nesting image

application on a touch monitor or by mouse click

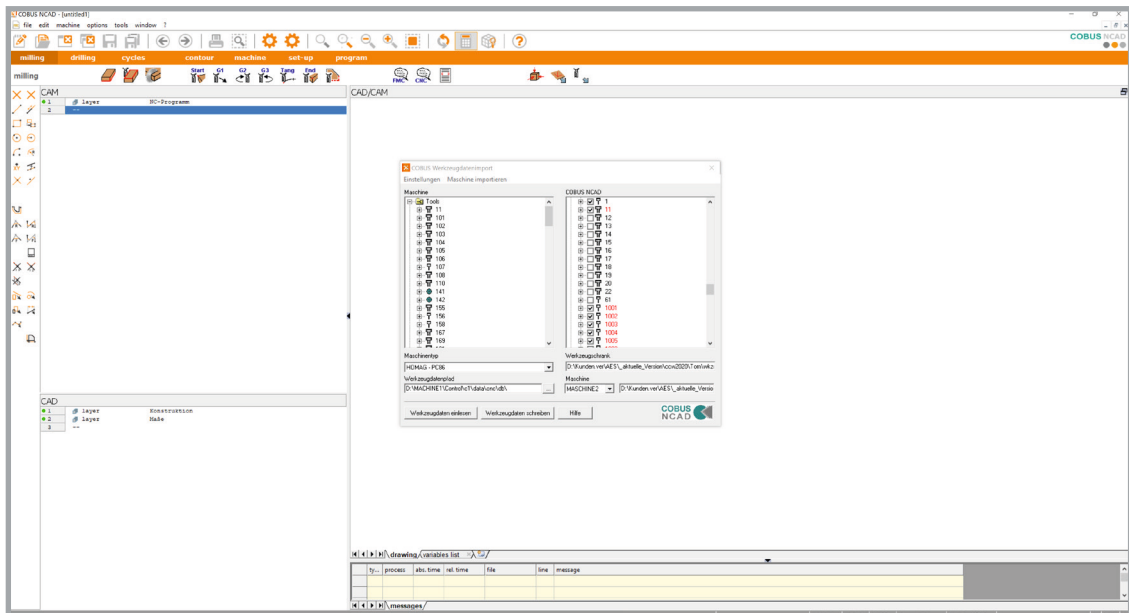
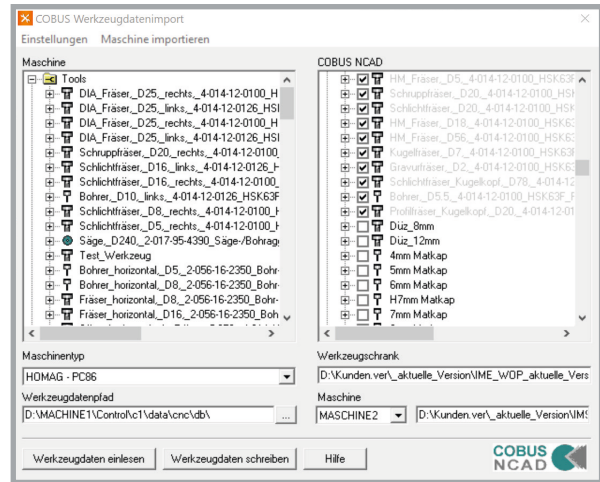


COBUS tool data import woodWOP

Via the COBUS tool data import you can tool data can be imported from woodWOP.

Possibilities:

- Reading in the complete tool list
- Reading the changed tools
- Reading the newly added tools



OUR LOCATIONS:
RHEDA-WIEDENBRÜCK | MÜNSTER
DORTMUND | WÜRZBURG

AND WITH OUR PARTNERS
IN EUROPE, USA & AUSTRALIA



COBUS ConCept | Nickelstraße 21 | 33378 Rheda-Wiedenbrück

www.cobus-concept.de